

# Campine MT wetted with H2ODISP

## Antimony Trioxide functions as:

- flame retardant synergist in PVC;
- flame retardant synergist in combination with Halogenated Flame retardants in any type of plastic;

## Campine MT wetted with H2ODISP

Campine MT is a very consistent and controlled Antimony trioxide grade with average particle size **between 1,3-1,5 µm**, wetted with H2ODISP ( water dispersable ) wetting agent.

Campine MT( Medium Tining) , wetted with H2ODISP is excellently mixable in emulsions with Brominated or Chlorinated FR-additives for textile coating and impregnation.

## Features & Benefits

Features	Benefits
Consistent particle size	Uniqe balance between optimal tinting, with a controlled viscosity and shear.
Controlled colour index	Consistent tinting strength in films The tinting level is intermediate between Campine N and Campine LT
Powder with controlled and consistent purity levels	Reliable purity of end product Reach – Compliant
Wetting with H2ODISP ( Water dispersion additive)	Low dusting grade Improved dispersability in H2O

## Standard Packaging

- 25 kg net paper bags, with PE coversheet and wrapped with stretch foil.  
1 pallet: 50 x 25 kg = 1250 kg.
- Bigbags: 1000 kg  
Other packaging available on request.

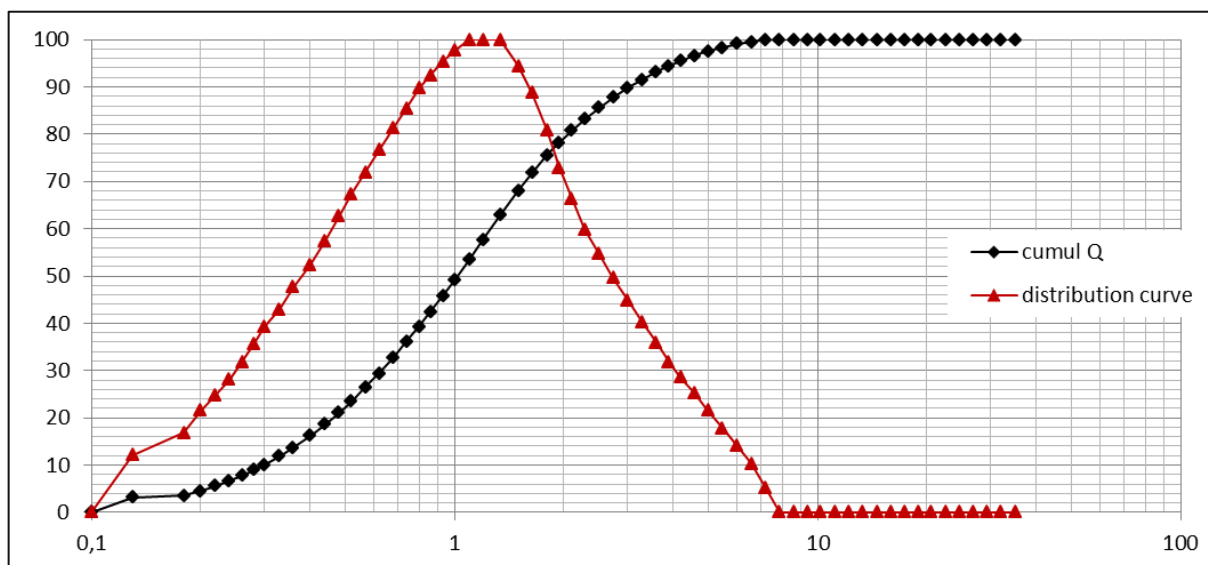
### For more info:

Nijverheidsstraat 2  
2340 Beerse, Belgium

T +32 14 60 15 11  
info@campine.com

[campine.com](https://www.campine.com)

## Particle distribution by laser diffraction: Campine MT



### Typical Properties

#### Particle size

- Average Particle size: 1,3-1,5 µm
- Sieve refusal ( on 45µm / 325 mesh sieve) is specified: max 0,1%

#### Purity levels

- Sb203% is specified: min 99,8 %
- Pb, As, Fe are specified :  
Pb: max 1000ppm  
As: max 750 ppm  
Fe: max 30 ppm

#### Wetting agent :

- wetted with 1- 4 % H2O (exact level specified in product code )

### Testmethod

CTM1

CTM4

CTM6

CTM2

### Shelf-life

Shelf-life is min. 2 years when stored in original packaging, sheltered from rain & humidity and outside of direct sunlight, for non-stacked pallets.

The information given in this data sheet or given otherwise, in technical assistance or obtained from our laboratory tests, is believed to be accurate and reliable. However, no warranty, express or implied, or guarantee is given as to the suitability, accuracy, reliability or completeness of the information. Some product properties are only infrequently measured and the typical values are not based on a statistically representative number of tests. This information does not hold us liable for the suitability of the product for the intended application, which we are not familiar with. It does not release you to verify, within the scope of your liability, whether the products are suitable or not for the intended application.

#### For more info:

Nijverheidsstraat 2  
2340 Beerse, Belgium

T +32 14 60 15 11  
info@campine.com

[campine.com](http://campine.com)