



PRODUCT DATA SHEET

Product:	Natural White Grape Type FL SD
Product Code:	7237265
Issue Date:	10/16/2024

PHYSICAL DATA:	
Quality Attribute	Specification: Target (Range)
Appearance	White to Off-White Powder
Aroma	Characteristic of White Grape
Taste	Characteristic of White Grape
Expected Shelf Life	12 Months
Recommended Storage Conditions	Closed container in a cool dry place 15-30C
Declarations	Vegan, Vegetarian, Natural, GMO Free (PCR Negative),
Allergens	None
Ingredient Declaration	Maltodextrin, Modified Food Starch, Natural Flavors
Label Declaration	All flavor ingredients in the product are approved for use in a regulation of the Food and Drug Administration or are generally recognized as safe from reliably published association lists
Pack-Off	Product packaged at 50 pound increments in a food grad polyethylene lined corrugate box.

Analytical/Microbiological Specifications:		
Analysis	Specification	Method
Coliforms	<=100 cfu/g	AOAC 991.14
Salmonella	Negative/10g	AOAC 082103
Yeast & Mold	<=100 cfu/g	AOAC 997.02
Loss on Drying	<8.0%	USP <731>
Particle Size Distribution	≥99.0% thru 20 mesh	Internal Procedure
Organoleptic	Conforms to Standard	Internal Procedure



ALLERGEN STATEMENT

Product:	Natural White Grape Type FL SD
Product Code:	7237265
Issue Date:	10/16/2024

Allergen	Present	Same Line
Soy	No	No
Tree Nuts <i>almond, brazil nuts, nutmeg, cashews, coconut</i>	No	No
Egg <i>eggs, albumin</i>	No	No
Fish <i>fish, anchovy, bass, cod, salmon, etc.</i>	No	No
Wheat <i>flour, gluten flour, starches, bran</i>	No	No
Milk <i>milk, casein, lactose, whey, etc.</i>	No	No
Sesame Seeds <i>oil, seed</i>	No	No
Peanuts <i>peanut oil, peanut flour, mandelona nuts</i>	No	No
Crustaceans <i>shrimp, crab, crayfish, lobster, prawn</i>	No	No
Other Sensitivities	Present	Same Line
Lupin	No	No
Carmine	No	No
Refined Oils	No	No
Glutamate/Glutamic Acid	No	No
Mustard <i>oil, seed</i>	No	No
Sulfites >10ppm <i>sulfur dioxide, sodium dithionite</i>	No	No
Yellow #5 <i>tartazine</i>	No	No
Gluten <i>wheat, barley, oats, flour</i>	No	No



NUTRITIONAL STATEMENT

Product:	Natural White Grape Type FL SD
Product Code:	7237265
Issue Date:	10/16/2024


	Per 100 grams (by calculation)
Calories, k/Cal	359
Calcium, mg/100g	25.6
Total Carbohydrates, g/100g	89.8
Cholesterol, mg/100g	0.0
Saturated Fat, g/100g	0.0
Total Fat, g/100g	0.0
Total Trans Fat, g/100g	0.0
Dietary Fiber, g/100g	0.0
Iron, mg/100g	0.0
Potassium, mg/100g	2.3
Protein, g/100g	0.0
Sodium, mg/100g	111.8
Total Sugars, g/100g	10.1
Added Sugars, g/100g	0.0
Vitamin D, mcg/100g	0.0
Ash, g/100g	0.12000



GMO STATEMENT

Product:	Natural White Grape Type FL SD
Product Code:	7237265
Issue Date:	10/16/2024

GMO Status

<p>Non-GMO</p> <p>Does not contain components from GMO sources.</p>	
<p>Non-GMO: Identity-Preserved</p> <p>Comprises of ingredients that were produced or derived from canola, corn, cotton, potato, and/or tomato; however these ingredients can be certified non-GMO. Compliant with European GM traceability standards EC 1829/2003 and 1830/2003.</p>	
<p>GMO Free (PCR Negative)</p> <p>Contains components that were produced or derived from canola, corn, cotton, potato, and/or tomato; however these components do not contain DNA/protein. This is validated by analytical testing or based on scientific principles.</p>	
<p>Contains or Derived from GMO sources</p> <p>Contains components that were produced or derived from a GMO source.</p>	



DIETARY RESTRICTIONS

Product:	Natural White Grape Type FL SD
Product Code:	7237265
Issue Date:	10/16/2024

Sensapure, Inc. declares that the above mentioned product, to the best of our knowledge, does not contain animal-derived ingredients including dairy, honey, and egg products. This product is suitable for vegetarians and vegans. In that this product does not contain ingredients of animal origin, Sensapure also declares the product is hormone free.



L

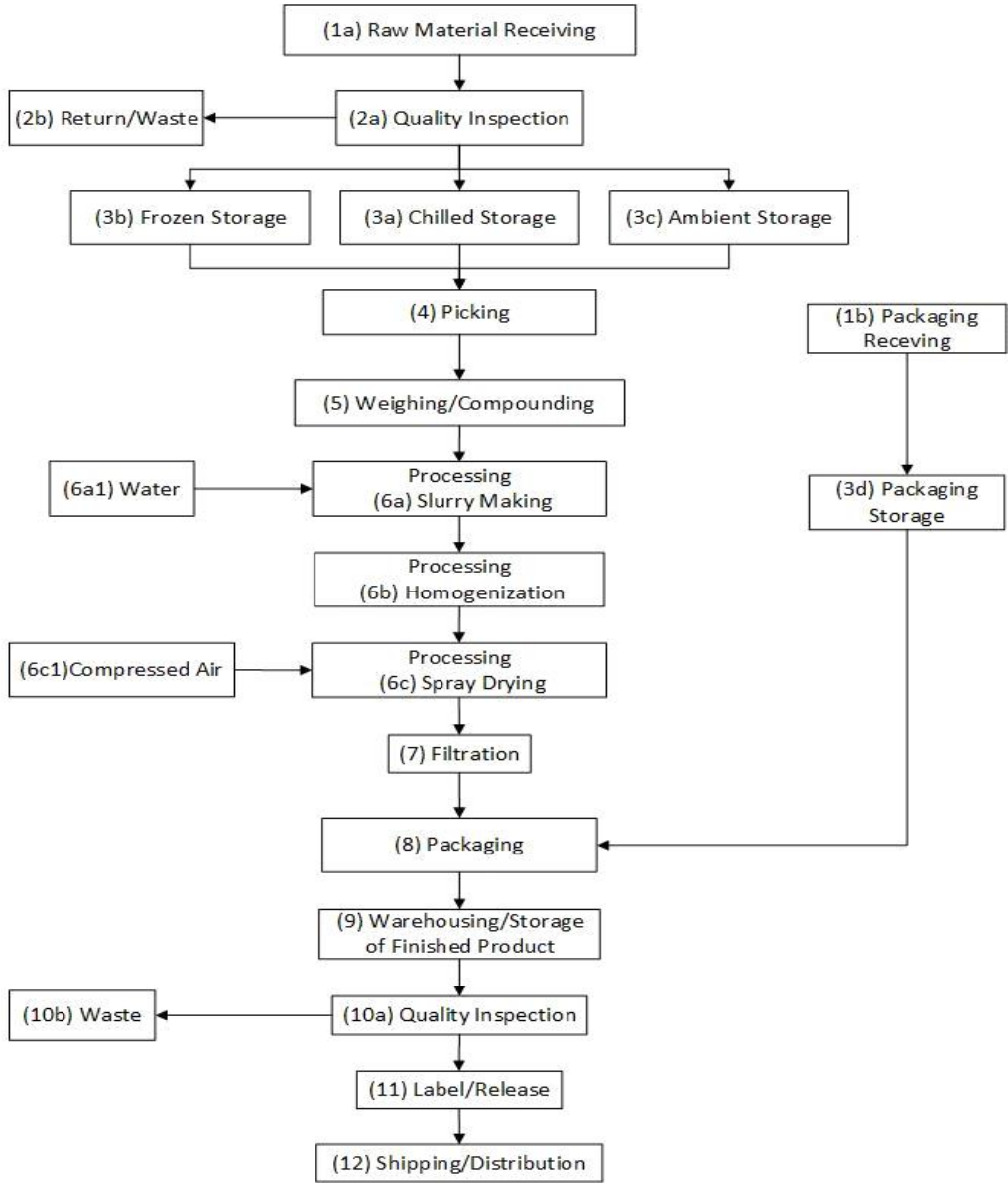
COUNTRY OF ORIGIN

Product:	Natural White Grape Type FL SD
Product Code:	7237265
Issue Date:	10/16/2024

Sensapure, Inc. certifies that the above mentioned product is manufactured in the United States of America (USA).

Spray Dry Flow Chart

Product: Natural White Grape Type FL SD
 Product Code: 7237265
 Issue Date: 10/16/2024





GLUTEN STATEMENT

Product:	Natural White Grape Type FL SD
Product Code:	7237265
Issue Date:	10/16/2024

Sensapure, Inc. declares that the above mentioned product, to the best of our knowledge, does not contain gluten.



CERTIFICATE OF ANALYSIS

Customer:
Product Description: Natural White Grape Type FL SD
Product Code: 7237265
Customer Item Code:

Lot Number:
Date of Manufacture:
Expiration Date:

Assay	Specification	Result
Organoleptic		
Appearance	White to Off-White Powder	
Aroma	Characteristic of White Grape	
Taste	Characteristic of White Grape	
Analytical Testing		
Particle Size	≥99.0% thru 20 mesh	
Loss on Drying	<8%	

DISCLOSURE: This document is an example Certificate of Analysis and does not represent a manufactured batch of material. Microbiological testing is performed on a rotational basis and is available upon request.

Approved By: _____

*Testing information included on actual certificates of Analysis may vary depending on internal testing frequencies and customer requirements.

Sensapure, Inc. | 1945 S. Fremont Drive, Salt Lake City, UT 84104 | 801-456-4284 | info@sensapure.com



SAFETY DATA SHEET

1. Identification

Product Information:	7237265
Product Name:	Natural White Grape Type FL SD
Recommended Use:	Flavor Ingredient
Application Method:	For Industrial Use Only
Supplied by:	Sensapure, Inc. 1945 S. Fremont Drive. Salt Lake City, UT 84104 E-Mail: info@sensapure.com
Emergency Telephone:	1-801-456-4284
Safety Data Sheet Coordinator:	info@sensapure.com

2. Hazards Identification

This product is a mixture for which no health hazard data exists. The hazard communication standard requires that mixtures be assumed to present the same health hazards as do the components that constitute at least 1% of the mixture (0.1% for carcinogens). OSHA has noted, however, that the hazards of individual components may be altered by including them in a mixture.

EMERGENCY OVERVIEW: Harmful to aquatic organisms, may cause long-term adverse effects in the aquatic environment.

GHS Classification

Carc. 1A, Skin Irrit. 2, STOT SE 3 RTI

Symbol(s) of Product



Signal Word

Danger

GHS HAZARD STATEMENTS

Skin Irritation, category 2	H315	Causes skin irritation.
STOT, single exposure, category 3, RTI	H335	May cause respiratory irritation.
Carcinogenicity, category 1A	H350	May cause cancer. Classified as carcinogenic Category 1 on the basis of epidemiological and/or animal data. Mixtures are classified as carcinogenic when at least 1 ingredient has been classified as carcinogenic and is present at 0.1% or above. Routes of exposure are dependant on ingredient form. May cause cancer <state route of exposure if it is conclusively proven that no other routes of exposure cause the hazard>.

GHS LABEL PRECAUTIONARY STATEMENTS

P201	Obtain special instructions before use.
P261	Avoid breathing dust/fume/gas/mist/vapours/spray.
P264	Wash ... thoroughly after handling.
P271	Use only outdoors or in a well-ventilated area.
P280	Wear protective gloves/protective clothing/eye protection/face protection.
P302+P352	IF ON SKIN: Wash with plenty of soap and water.
P304+P340	IF INHALED: Remove person to fresh air and keep comfortable for breathing.
P308+P313	IF exposed or concerned: Get medical advice/attention.
P312	Call a POISON CENTER or doctor/physician if you feel unwell.
P321	Specific treatment (see ... on this label).

P332+P313
 P362+P364
 P403+P233
 P405
 P501

If skin irritation occurs: Get medical advice/attention.
 Take off contaminated clothing and wash it before reuse.
 Store in a well-ventilated place. Keep container tightly closed.
 Store locked up.
 Dispose of contents/container to ...

3. Composition/Information on Ingredients

<u>Chemical Name</u>	<u>CAS-No.</u>	<u>Wt. %</u>	<u>GHS Symbols</u>	<u>GHS Statements</u>
ETHYL PROPIONATE	105-37-3	1.0-2.5	No Information	No Information
ACETALDEHYDE	75-07-0	0.1-1.0	No Information	No Information

Exact percentages have been withheld as trade secrets as defined by 29 CFR 1910.1200

4. First-aid Measures



FIRST AID - INHALATION: If inhaled, remove to fresh air. Administer oxygen if necessary. Consult a physician if symptoms persist or exposure was severe.

FIRST AID - SKIN CONTACT: Remove contaminated clothing. Wash with soap and water. Obtain medical attention if irritation persists.

FIRST AID - EYE CONTACT: Rinse thoroughly with plenty of water for at least 15 minutes and consult a physician.

FIRST AID - INGESTION: DO NOT induce vomiting unless directed to do so by a physician or poison control center.

5. Fire-fighting Measures

UNUSUAL FIRE AND EXPLOSION HAZARDS: No Information

SPECIAL FIREFIGHTING PROCEDURES: Standard procedure for chemical fires. WaterFoam

EXTINGUISHING MEDIA: Alcohol Foam, Carbon Dioxide, Dry Chemical, Foam, Water Fog

6. Accidental Release Measures

ENVIRONMENTAL PRECAUTIONS: No Information

STEPS TO BE TAKEN IN CASE MATERIAL IS RELEASED OR SPILLED: Stop leaks. Clean up large spills with vacuum truck. Soak up small spills with absorbent material and place in labeled waste container. Observe all Federal, State, and Local waste disposal regulations and report any release to the environment. Wear adequate personal protective clothing and equipment when handling this material.

7. Handling and Storage



HANDLING: Avoid contact with skin or eyes. Avoid breathing vapors. Handle in well ventilated area. Empty containers may contain explosive vapors. Smoking in area prohibited. Remove all ignition sources while handling.

STORAGE: No Information

8. Exposure Controls/Personal Protection

Ingredients with Occupational Exposure Limits

<u>Chemical Name</u>	<u>ACGIH TLV-TWA</u>	<u>ACGIH-TLV STEL</u>	<u>OSHA PEL-TWA</u>	<u>OSHA PEL-CEILING</u>
Ethyl Propionate	N.E.	N.E.	N.E.	N.E.
Acetaldehyde	25 ppm	N.E.	N.E.	N.E.

Further Advice: MEL = Maximum Exposure Limit OES = Occupational Exposure Standard SUP = Supplier's Recommendation Sk = Skin Sensitizer N.E. = Not Established

Personal Protection**RESPIRATORY PROTECTION:** No Information**SKIN PROTECTION:** Impervious gloves. Lab coat**EYE PROTECTION:** Safety glasses with side-shields**OTHER PROTECTIVE EQUIPMENT:** Eye wash and safety shower.**HYGIENIC PRACTICES:** Handle in accordance with good industrial hygiene and safety practice.**9. Physical and Chemical Properties**

Appearance:	No Information	Physical State:	No Information
Odor:	Characteristic of White	Odor Threshold:	No Information
Density, g/cm³:	0.000	pH:	No Information
Freeze Point, °C:	No Information	Viscosity:	No Information
Solubility in Water:	No Information	Partition Coefficient, n-octanol/ water:	No Information
Decomposition temperature, °C	No Information		
Boiling Range, °C:	21 - 0	Explosive Limits, %:	N.I. - N.I.
Combustibility:	Does not Support Combustion	Flash Point, °C:	-38.9
Evaporation Rate:	No Information	Auto-Ignition Temperature, °C	No Information
Vapor Density:	No Information	Vapor Pressure, mmHg:	No Information

(See "Other information" Section for abbreviation legend)

10. Stability and Reactivity**STABILITY:** Stable under recommended storage conditions.**CONDITIONS TO AVOID:** No Information**INCOMPATIBILITY:** None known**HAZARDOUS DECOMPOSITION PRODUCTS:** No Information**11. Toxicological Information**

This product is a mixture for which no health hazard data exists. The hazard communication standard requires that mixtures be assumed to present the same health hazards as do the components that constitute at least 1% of the mixture (0.1% for carcinogens). OSHA has noted, however, that the hazards of individual components may be altered by including them in a mixture.

This preparation has not been evaluated.

EFFECT OF OVEREXPOSURE - INHALATION: No Information**EFFECT OF OVEREXPOSURE - SKIN CONTACT:** No known effects.**EFFECT OF OVEREXPOSURE - EYE CONTACT:** May cause irritation.**EFFECT OF OVEREXPOSURE - INGESTION:** May be harmful if swallowed.**CARCINOGENICITY:** No Information

PRIMARY ROUTE(S) OF ENTRY: Eye Contact, Ingestion, Inhalation, Skin Contact

Acute Toxicity Values

The acute effects of this product have not been tested. Data on individual components are tabulated below

CAS-No.	Chemical Name	Oral LD50	Dermal LD50	Vapor LC50
No hazardous toxicological information exists				

N.I. = No Information

12. Ecological Information

ECOLOGICAL INFORMATION: May cause long-term adverse effects in the aquatic environment.

13. Disposal Information



Product

DISPOSAL METHOD: Can be incinerated, when in compliance with local regulations. Must be disposed of in accordance with all applicable Federal, State, and Local regulations.

STEPS TO BE TAKEN IN CASE MATERIAL IS RELEASED OR SPILLED: Stop leaks. Clean up large spills with vacuum truck. Soak up small spills with absorbent material and place in labeled waste container. Observe all Federal, State, and Local waste disposal regulations and report any release to the environment. Wear adequate personal protective clothing and equipment when handling this material.

14. Transport Information

SPECIAL TRANSPORT PRECAUTIONS: No Information

DOT Proper Shipping Name:	No Information	Packing Group:	I
DOT Technical Name:	No Information	Hazard SubClass:	No Information
DOT Hazard Class:	No Information	Resp. Guide Page:	No Information
DOT UN/NA Number:	No Information		

15. Regulatory Information

U.S. Federal Regulations:

CERCLA - SARA Hazard Category

No Information

Carcinogenicity, Skin Corrosion or Irritation, Specific target organ toxicity (single or repeated exposure)

SARA SECTION 313:

Section 313 of title III of the Superfund Amendment and Reauthorization Act of 1986 (SARA). This product does not contain any reportable levels of a chemical or chemicals which are subject to the reporting requirements of the Act and Title 40 of the Code of Federal Regulations, Part 372

No Sara 313 components exist in this product.

TOXIC SUBSTANCES CONTROL ACT:

