



PRODUCT DATA SHEET

Product:	Natural Cherry Type FL WS
Product Code:	7237211
Issue Date:	9/23/2024

PHYSICAL DATA:	
Quality Attribute	Specification: Target (Range)
Appearance	Clear to Pale Yellow Transparent Liquid
Aroma	Characteristic of Cherry
Taste	Characteristic of Cherry
Flash Point (C)	20
Pounds per Gallon	7.230
Recommended Storage Conditions	Closed container in a cool dry place 15-30C
Expected Shelf Life	9 Months
Declarations	Vegan, Vegetarian, Natural, GMO Free (PCR Negative),
Allergens	None
Ingredient Declaration	Ethyl Alcohol, Propylene Glycol, Water, and Natural Flavors
Label Declaration	All flavor ingredients in the product are approved for use in a regulation of the Food and Drug Administration or are generally recognized as safe from reliably published association lists
Pack-Off	Packaged in FDA approved materials. HDPE container.
Storage and Handling	Store in closed containers in a cool, dry location with at temperature range of 15-30C.

Analytical/Microbiological Specifications:		
Analysis	Specification	Method
Specific Gravity (25C)	0.8184 - 0.9184	Internal Procedure
Refractive Index	1.3237 - 1.4237	Internal Procedure
Organoleptic	Conforms to Standard	Internal Procedure



ALLERGEN STATEMENT

Product:	Natural Cherry Type FL WS
Product Code:	7237211
Issue Date:	9/23/2024

Allergen	Present	Same Line
Soy	No	No
Tree Nuts <i>almond, brazil nuts, nutmeg, cashews, coconut</i>	No	No
Egg <i>eggs, albumin</i>	No	No
Fish <i>fish, anchovy, bass, cod, salmon, etc.</i>	No	No
Wheat <i>flour, gluten flour, starches, bran</i>	No	No
Milk <i>milk, casein, lactose, whey, etc.</i>	No	No
Sesame Seeds <i>oil, seed</i>	No	No
Peanuts <i>peanut oil, peanut flour, mandelona nuts</i>	No	No
Crustaceans <i>shrimp, crab, crayfish, lobster, prawn</i>	No	No
Other Sensitivities	Present	Same Line
Lupin	No	No
Carmine	No	No
Refined Oils	No	No
Glutamate/Glutamic Acid	No	No
Mustard <i>oil, seed</i>	No	No
Sulfites >10ppm <i>sulfur dioxide, sodium dithionite</i>	No	No
Yellow #5 <i>tartazine</i>	No	No
Gluten <i>wheat, barley, oats, flour</i>	No	No



NUTRITIONAL STATEMENT

Product:	Natural Cherry Type FL WS
Product Code:	7237211
Issue Date:	9/23/2024

	Per 100 grams (by calculation)
Calories, k/Cal	578
Calcium, mg/100g	0.0
Total Carbohydrates, g/100g	16.2
Cholesterol, mg/100g	0.0
Saturated Fat, g/100g	0.0
Total Fat, g/100g	0.0
Total Trans Fat, g/100g	0.0
Dietary Fiber, g/100g	0.0
Iron, mg/100g	0.0
Potassium, mg/100g	0.0
Protein, g/100g	0.0
Sodium, mg/100g	0.0
Total Sugars, g/100g	0.0
Added Sugars, g/100g	0.0
Vitamin D, mcg/100g	0.0
Ash, g/100g	0.00000



GMO STATEMENT

Product:	Natural Cherry Type FL WS
Product Code:	7237211
Issue Date:	9/23/2024

GMO Status

<p>Non-GMO</p> <p>Does not contain components from GMO sources.</p>	
<p>Non-GMO: Identity-Preserved</p> <p>Comprises of ingredients that were produced or derived from canola, corn, cotton, potato, and/or tomato; however these ingredients can be certified non-GMO. Compliant with European GM traceability standards EC 1829/2003 and 1830/2003.</p>	
<p>GMO Free (PCR Negative)</p> <p>Contains components that were produced or derived from canola, corn, cotton, potato, and/or tomato; however these components do not contain DNA/protein. This is validated by analytical testing or based on scientific principles.</p>	
<p>Contains or Derived from GMO sources</p> <p>Contains components that were produced or derived from a GMO source.</p>	



DIETARY RESTRICTIONS

Product:	Natural Cherry Type FL WS
Product Code:	7237211
Issue Date:	9/23/2024

Sensapure, Inc. declares that the above mentioned product, to the best of our knowledge, does not contain animal-derived ingredients including dairy, honey, and egg products. This product is suitable for vegetarians and vegans. In that this product does not contain ingredients of animal origin, Sensapure also declares the product is hormone free.



L

COUNTRY OF ORIGIN

Product:	Natural Cherry Type FL WS
Product Code:	7237211
Issue Date:	9/23/2024

Sensapure, Inc. certifies that the above mentioned product is manufactured in the United States of America (USA).



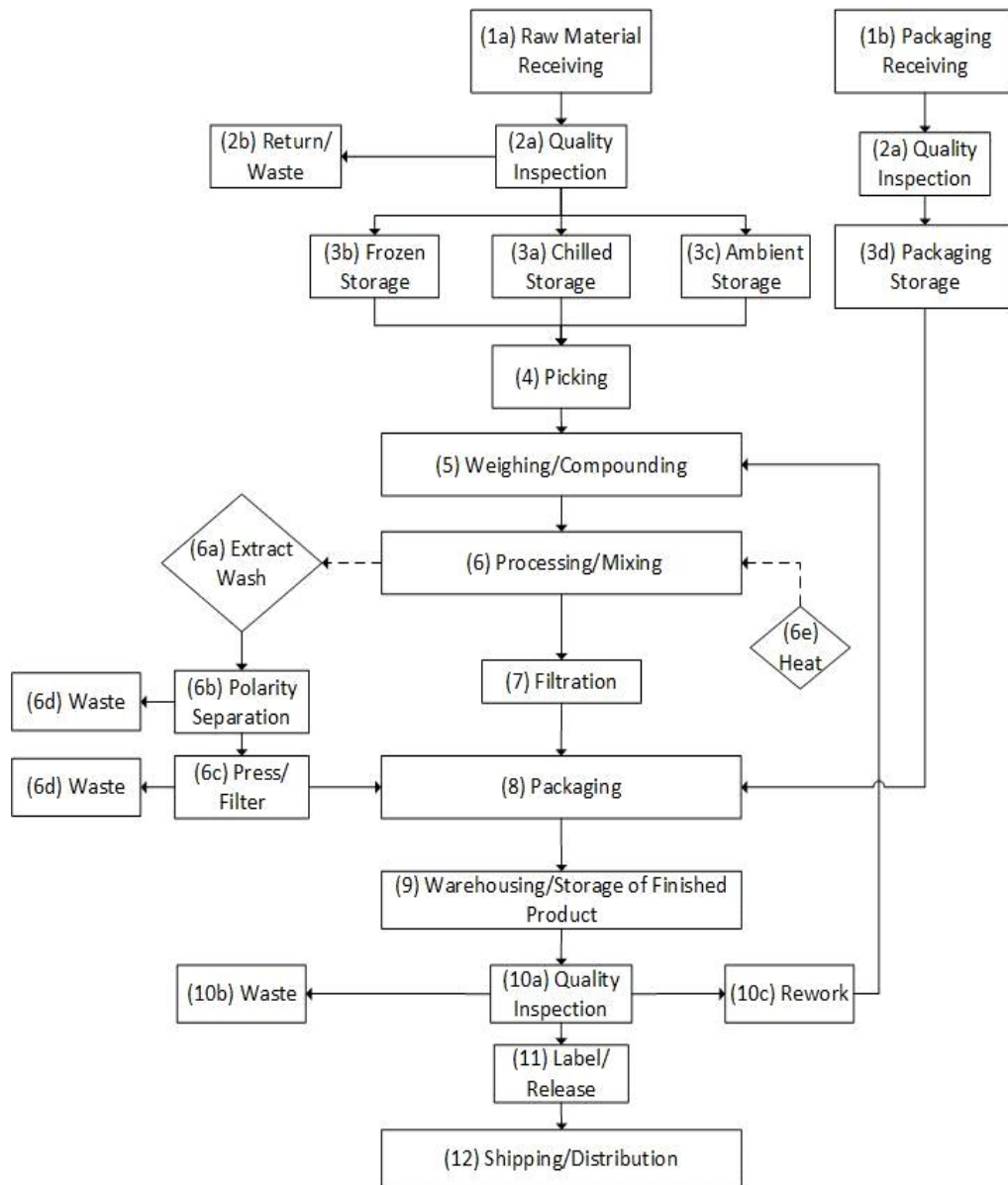
GLUTEN STATEMENT

Product:	Natural Cherry Type FL WS
Product Code:	7237211
Issue Date:	9/23/2024

Sensapure, Inc. declares that the above mentioned product, to the best of our knowledge, does not contain gluten.

Liquid Flow Chart

Product: Natural Cherry Type FL WS
 Product Code: 7237211
 Issue Date: 9/23/2024





SAFETY DATA SHEET

1. Identification

Product Information:	7237211
Product Name:	Natural Cherry Type FL WS
Recommended Use:	Flavor Ingredient
Application Method:	For Industrial Use Only
Supplied by:	Sensapure, Inc. 1945 S. Fremont Drive. Salt Lake City, UT 84104 E-Mail: info@sensapure.com
Emergency Telephone:	1-801-456-4284
Safety Data Sheet Coordinator:	info@sensapure.com

2. Hazards Identification

This product is a mixture for which no health hazard data exists. The hazard communication standard requires that mixtures be assumed to present the same health hazards as do the components that constitute at least 1% of the mixture (0.1% for carcinogens). OSHA has noted, however, that the hazards of individual components may be altered by including them in a mixture.

EMERGENCY OVERVIEW: Harmful to aquatic organisms, may cause long-term adverse effects in the aquatic environment.

GHS Classification

Flam. Liq. 2

Symbol(s) of Product**Signal Word**

Danger

GHS HAZARD STATEMENTS

Flammable Liquid, category 2 H225 Highly flammable liquid and vapour.

GHS LABEL PRECAUTIONARY STATEMENTS

P210	Keep away from heat, hot surfaces, sparks, open flames and other ignition sources. No smoking.
P233	Keep container tightly closed.
P280	Wear protective gloves/protective clothing/eye protection/face protection.
P303+P361+P353	IF ON SKIN (or hair): Take off immediately all contaminated clothing. Rinse skin with water [or shower].
P370+P378	In case of fire: Use... to extinguish.
P403+P235	Store in a well-ventilated place. Keep cool.
P501	Dispose of contents/container to ...

GHS SDS PRECAUTIONARY STATEMENTS

P240	Ground and bond container and receiving equipment.
P241	Use explosion-proof [electrical/ventilating/lighting/...] equipment.
P242	Use non-sparking tools.
P243	Take action to prevent static discharges.

3. Composition/Information on Ingredients

Chemical Name**CAS-No.****Wt. %****GHS Symbols****GHS Statements**

No hazardous items exist

Exact percentages have been withheld as trade secrets as defined by 29 CFR 1910.1200

4. First-aid Measures**FIRST AID - INHALATION:** If inhaled, remove to fresh air. Administer oxygen if necessary. Consult a physician if symptoms persist or exposure was severe.**FIRST AID - SKIN CONTACT:** Remove contaminated clothing. Wash with soap and water. Obtain medical attention if irritation persists.**FIRST AID - EYE CONTACT:** Rinse thoroughly with plenty of water for at least 15 minutes and consult a physician.**FIRST AID - INGESTION:** DO NOT induce vomiting unless directed to do so by a physician or poison control center.**5. Fire-fighting Measures****UNUSUAL FIRE AND EXPLOSION HAZARDS:** No Information**SPECIAL FIREFIGHTING PROCEDURES:** Standard procedure for chemical fires. WaterFoam**EXTINGUISHING MEDIA:** Alcohol Foam, Carbon Dioxide, Dry Chemical, Foam, Water Fog**6. Accidental Release Measures****ENVIRONMENTAL PRECAUTIONS:** No Information**STEPS TO BE TAKEN IN CASE MATERIAL IS RELEASED OR SPILLED:** Stop leaks. Clean up large spills with vacuum truck. Soak up small spills with absorbent material and place in labeled waste container. Observe all Federal, State, and Local waste disposal regulations and report any release to the environment. Wear adequate personal protective clothing and equipment when handling this material.**7. Handling and Storage****HANDLING:** Avoid contact with skin or eyes. Avoid breathing vapors. Handle in well ventilated area. Empty containers may contain explosive vapors. Smoking in area prohibited. Remove all ignition sources while handling.**STORAGE:** No Information**8. Exposure Controls/Personal Protection****Ingredients with Occupational Exposure Limits****Chemical Name****ACGIH TLV-TWA****ACGIH-TLV STEL****OSHA PEL-TWA****OSHA PEL-CEILING**

No hazardous items exist

Further Advice: MEL = Maximum Exposure Limit OES = Occupational Exposure Standard SUP = Supplier's Recommendation Sk = Skin Sensitizer N.E. = Not Established**Personal Protection****RESPIRATORY PROTECTION:** No Information**SKIN PROTECTION:** Impervious gloves. Lab coat



EYE PROTECTION: Safety glasses with side-shields



OTHER PROTECTIVE EQUIPMENT: Eye wash and safety shower.



HYGIENIC PRACTICES: Handle in accordance with good industrial hygiene and safety practice.

9. Physical and Chemical Properties

Appearance:	No Information	Physical State:	No Information
Odor:	Characteristic of Cherry	Odor Threshold:	No Information
Density, g/cm³:	0.000	pH:	No Information
Freeze Point, °C:	No Information	Viscosity:	No Information
Solubility in Water:	No Information	Partition Coefficient, n-octanol/ water:	No Information
Decomposition temperature, °C	No Information		
Boiling Range, °C:	Not Determined	Explosive Limits, %:	N.I. - N.I.
Combustibility:	Does not Support Combustion	Flash Point, °C:	20.0
Evaporation Rate:	No Information	Auto-Ignition Temperature, °C	No Information
Vapor Density:	No Information	Vapor Pressure, mmHg:	No Information

(See "Other information" Section for abbreviation legend)

10. Stability and Reactivity

STABILITY: Stable under recommended storage conditions.

CONDITIONS TO AVOID: No Information

INCOMPATIBILITY: None known

HAZARDOUS DECOMPOSITION PRODUCTS: No Information

11. Toxicological Information

This product is a mixture for which no health hazard data exists. The hazard communication standard requires that mixtures be assumed to present the same health hazards as do the components that constitute at least 1% of the mixture (0.1% for carcinogens). OSHA has noted, however, that the hazards of individual components may be altered by including them in a mixture.

This preparation has not been evaluated.

EFFECT OF OVEREXPOSURE - INHALATION: No Information

EFFECT OF OVEREXPOSURE - SKIN CONTACT: No known effects.

EFFECT OF OVEREXPOSURE - EYE CONTACT: May cause irritation.

EFFECT OF OVEREXPOSURE - INGESTION: May be harmful if swallowed.

CARCINOGENICITY: No Information

PRIMARY ROUTE(S) OF ENTRY: Eye Contact, Ingestion, Inhalation, Skin Absorption, Skin Contact

Acute Toxicity Values

The acute effects of this product have not been tested. Data on individual components are tabulated below

CAS-No.	Chemical Name	Oral LD50	Dermal LD50	Vapor LC50
No hazardous toxicological information exists				

N.I. = No Information

12. Ecological Information

ECOLOGICAL INFORMATION: May cause long-term adverse effects in the aquatic environment.

13. Disposal Information



Product

DISPOSAL METHOD: Can be incinerated, when in compliance with local regulations. Must be disposed of in accordance with all applicable Federal, State, and Local regulations.

STEPS TO BE TAKEN IN CASE MATERIAL IS RELEASED OR SPILLED: Stop leaks. Clean up large spills with vacuum truck. Soak up small spills with absorbent material and place in labeled waste container. Observe all Federal, State, and Local waste disposal regulations and report any release to the environment. Wear adequate personal protective clothing and equipment when handling this material.

14. Transport Information

SPECIAL TRANSPORT PRECAUTIONS: No Information

DOT Proper Shipping Name:	No Information	Packing Group:	II
DOT Technical Name:	No Information	Hazard SubClass:	No Information
DOT Hazard Class:	No Information	Resp. Guide Page:	No Information
DOT UN/NA Number:	No Information		

15. Regulatory Information

U.S. Federal Regulations:

CERCLA - SARA Hazard Category

No Information

Flammable (gases, aerosols, liquids, or solids)

SARA SECTION 313:

Section 313 of title III of the Superfund Amendment and Reauthorization Act of 1986 (SARA). This product does not contain any reportable levels of a chemical or chemicals which are subject to the reporting requirements of the Act and Title 40 of the Code of Federal Regulations, Part 372

No Sara 313 components exist in this product.

TOXIC SUBSTANCES CONTROL ACT:

No TSCA components exist in this product.

