



## PRODUCT DATA SHEET

Product: Natural Cherry Lime Type FL SD  
 Product Code: 7237210  
 Issue Date: 9/23/2024

### PHYSICAL DATA:

Quality Attribute	Specification: Target (Range)
Appearance	White or Off White Powder
Aroma	Characteristic of Cherry Lime
Taste	Characteristic of Cherry Lime
Expected Shelf Life	6 Months
Recommended Storage Conditions	Closed container in a cool dry place 15-30C
Declarations	Vegan, Vegetarian, Natural, GMO Free (PCR Negative),
Allergens	None
Ingredient Declaration	Maltodextrin, Modified Food Starch, Natural Flavors
Label Declaration	All flavor ingredients in the product are approved for use in a regulation of the Food and Drug Administration or are generally recognized as safe from reliably published association lists
Pack-Off	Product packaged at 50 pound increments in a food grad polyethylene lined corrugate box.

### Analytical/Microbiological Specifications:

Analysis	Specification	Method
Coliforms	<=100 cfu/g	AOAC 991.14
Salmonella	Negative/10g	AOAC 082103
Yeast & Mold	<=100 cfu/g	AOAC 997.02
Loss on Drying	<8.0%	USP <731>
Particle Size Distribution	≥99.0% thru 20 mesh	Internal Procedure
Organoleptic	Conforms to Standard	Internal Procedure



## ALLERGEN STATEMENT

Product: Natural Cherry Lime Type FL SD  
 Product Code: 7237210  
 Issue Date: 9/23/2024

Allergen	Present	Same Line
<b>Soy</b>	No	No
<b>Tree Nuts</b> <i>almond, brazil nuts, nutmeg, cashews, coconut</i>	No	No
<b>Egg</b> <i>eggs, albumin</i>	No	No
<b>Fish</b> <i>fish, anchovy, bass, cod, salmon, etc.</i>	No	No
<b>Wheat</b> <i>flour, gluten flour, starches, bran</i>	No	No
<b>Milk</b> <i>milk, casein, lactose, whey, etc.</i>	No	No
<b>Sesame Seeds</b> <i>oil, seed</i>	No	No
<b>Peanuts</b> <i>peanut oil, peanut flour, mandelona nuts</i>	No	No
<b>Crustaceans</b> <i>shrimp, crab, crayfish, lobster, prawn</i>	No	No
<b>Other Sensitivities</b>	<b>Present</b>	<b>Same Line</b>
<b>Lupin</b>	No	No
<b>Carmine</b>	No	No
<b>Refined Oils</b>	No	No
<b>Glutamate/Glutamic Acid</b>	No	No
<b>Mustard</b> <i>oil, seed</i>	No	No
<b>Sulfites &gt;10ppm</b> <i>sulfur dioxide, sodium dithionite</i>	No	No
<b>Yellow #5</b> <i>tartazine</i>	No	No
<b>Gluten</b> <i>wheat, barley, oats, flour</i>	No	No



## NUTRITIONAL STATEMENT

Product: Natural Cherry Lime Type FL SD  
Product Code: 7237210  
Issue Date: 9/23/2024


	Per 100 grams (by calculation)
Calories, k/Cal	332
Calcium, mg/100g	25.0
Total Carbohydrates, g/100g	83.1
Cholesterol, mg/100g	0.0
Saturated Fat, g/100g	0.0
Total Fat, g/100g	0.0
Total Trans Fat, g/100g	0.0
Dietary Fiber, g/100g	0.0
Iron, mg/100g	0.1
Potassium, mg/100g	3.1
Protein, g/100g	0.0
Sodium, mg/100g	137.0
Total Sugars, g/100g	14.0
Added Sugars, g/100g	0.0
Vitamin D, mcg/100g	0.0
Ash, g/100g	0.20000



## GMO STATEMENT

Product: Natural Cherry Lime Type FL SD  
Product Code: 7237210  
Issue Date: 9/23/2024

### GMO Status

<b>Non-GMO</b> Does not contain components from GMO sources.	
<b>Non-GMO: Identity-Preserved</b> Comprises of ingredients that were produced or derived from canola, corn, cotton, potato, and/or tomato; however these ingredients can be certified non-GMO. Compliant with European GM traceability standards EC 1829/2003 and 1830/2003.	
<b>GMO Free (PCR Negative)</b> Contains components that were produced or derived from canola, corn, cotton, potato, and/or tomato; however these components do not contain DNA/protein. This is validated by analytical testing or based on scientific principles.	
<b>Contains or Derived from GMO sources</b> Contains components that were produced or derived from a GMO source.	



## DIETARY RESTRICTIONS

Product:	Natural Cherry Lime Type FL SD
Product Code:	7237210
Issue Date:	9/23/2024

Sensapure, Inc. declares that the above mentioned product, to the best of our knowledge, does not contain animal-derived ingredients including dairy, honey, and egg products. This product is suitable for vegetarians and vegans. In that this product does not contain ingredients of animal origin, Sensapure also declares the product is hormone free.



L

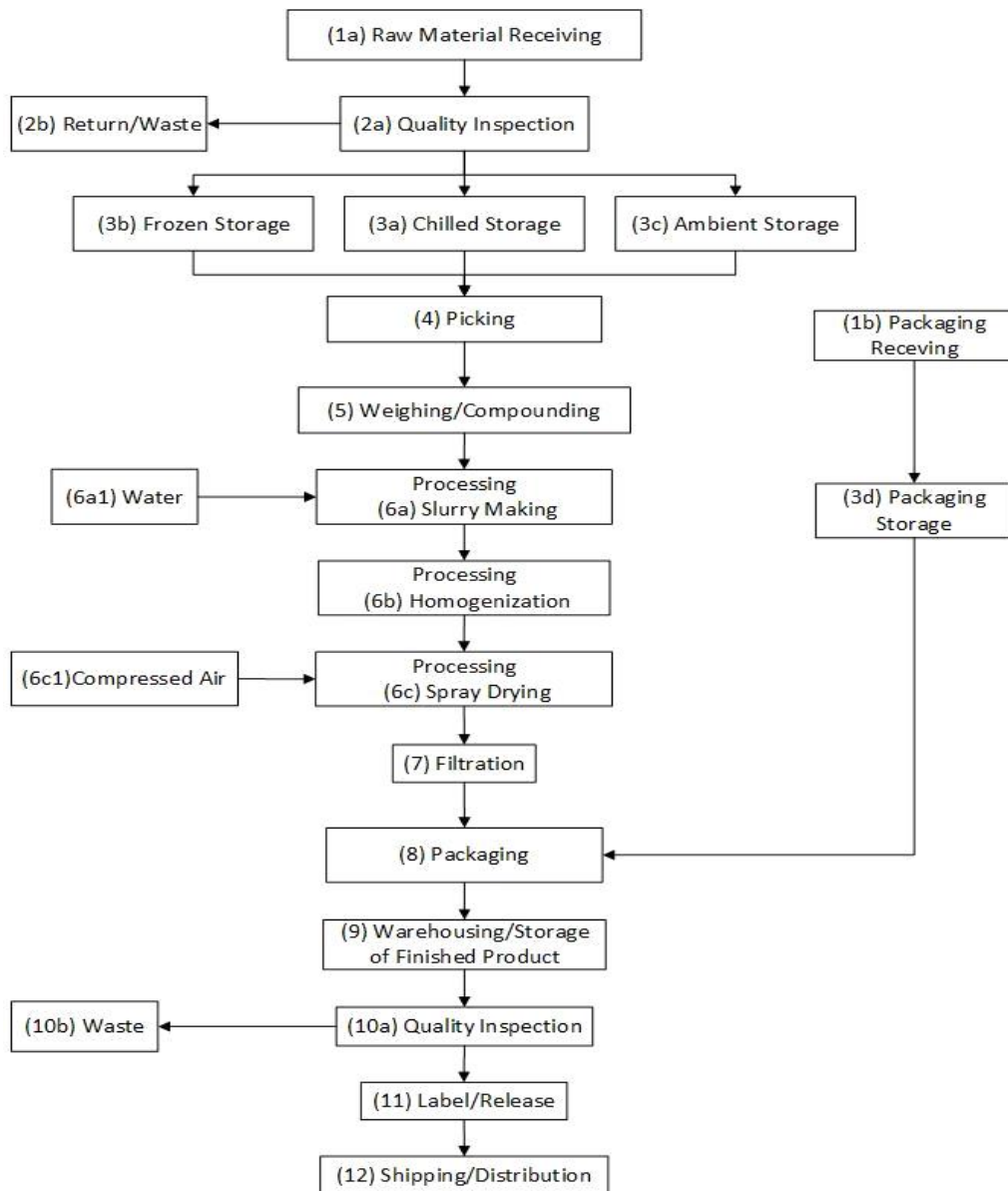
COUNTRY OF ORIGIN

Product:	Natural Cherry Lime Type FL SD
Product Code:	7237210
Issue Date:	9/23/2024

Sensapure, Inc. certifies that the above mentioned product is manufactured in the United States of America (USA).

## Spray Dry Flow Chart

Product: Natural Cherry Lime Type FL SD  
Product Code: 7237210  
Issue Date: 9/23/2024





## GLUTEN STATEMENT

Product:	Natural Cherry Lime Type FL SD
Product Code:	7237210
Issue Date:	9/23/2024

Sensapure, Inc. declares that the above mentioned product, to the best of our knowledge, does not contain gluten.





## CERTIFICATE OF ANALYSIS

**Customer:****Product Description:** Natural Cherry Lime Type FL SD**Product Code:** 7237210**Customer Item Code:****Lot Number:****Date of Manufacture:****Expiration Date:**

Assay	Specification	Result
<b>Organoleptic</b>		
Appearance	White or Off White Powder	
Aroma	Characteristic of Cherry Lime	
Taste	Characteristic of Cherry Lime	
<b>Analytical Testing</b>		
Particle Size	≥99.0% thru 20 mesh	
Loss on Drying	<8%	

**DISCLOSURE:** This document is an example Certificate of Analysis and does not represent a manufactured batch of material. Microbiological testing is performed on a rotational basis and is available upon request.

Approved By: \_\_\_\_\_

\*Testing information included on actual certificates of Analysis may vary depending on internal testing frequencies and customer requirements.

Sensapure, Inc. | 1945 S. Fremont Drive, Salt Lake City, UT 84104 | 801-456-4284 | info@sensapure.com



## SAFETY DATA SHEET

## 1. Identification

<b>Product Information:</b>	7237210
<b>Product Name:</b>	Natural Cherry Lime Type FL SD
<b>Recommended Use:</b>	Flavor Ingredient
<b>Application Method:</b>	For Industrial Use Only
<b>Supplied by:</b>	Sensapure, Inc. 1945 S. Fremont Drive. Salt Lake City, UT 84104 E-Mail: info@sensapure.com
<b>Emergency Telephone:</b>	1-801-456-4284
<b>Safety Data Sheet Coordinator:</b>	info@sensapure.com

## 2. Hazards Identification

This product is a mixture for which no health hazard data exists. The hazard communication standard requires that mixtures be assumed to present the same health hazards as do the components that constitute at least 1% of the mixture (0.1% for carcinogens). OSHA has noted, however, that the hazards of individual components may be altered by including them in a mixture.

**EMERGENCY OVERVIEW:** Harmful to aquatic organisms, may cause long-term adverse effects in the aquatic environment.

### GHS Classification

Resp. Sens. 1, Skin Irrit. 2, Skin Sens. 1, STOT SE 3 NE, STOT SE 3 RTI

### Symbol(s) of Product



### Signal Word

Danger

### GHS HAZARD STATEMENTS

Skin Irritation, category 2	H315	Causes skin irritation.
Skin Sensitizer, category 1	H317	May cause an allergic skin reaction.
Respiratory Sensitizer, category 1	H334	May cause allergy or asthma symptoms or breathing difficulties if inhaled.
STOT, single exposure, category 3, RTI	H335	May cause respiratory irritation.
STOT, single exposure, category 3, NE	H336	May cause drowsiness or dizziness.

### GHS LABEL PRECAUTIONARY STATEMENTS

P261	Avoid breathing dust/fume/gas/mist/vapours/spray.
P264	Wash ... thoroughly after handling.
P271	Use only outdoors or in a well-ventilated area.
P272	Contaminated work clothing should not be allowed out of the workplace.
P280	Wear protective gloves/protective clothing/eye protection/face protection.
P284	[In case of inadequate ventilation] wear respiratory protection.
P302+P352	IF ON SKIN: Wash with plenty of soap and water.
P304+P340	IF INHALED: Remove person to fresh air and keep comfortable for breathing.
P312	Call a POISON CENTER or doctor/physician if you feel unwell.
P321	Specific treatment (see ... on this label).
P332+P313	If skin irritation occurs: Get medical advice/attention.
P333+P313	If skin irritation or rash occurs: Get medical advice/attention.
P342+P311	If experiencing respiratory symptoms: Call a POISON CENTER or doctor/physician.

P362+P364  
P403+P233  
P405  
P501

Take off contaminated clothing and wash it before reuse.  
Store in a well-ventilated place. Keep container tightly closed.  
Store locked up.  
Dispose of contents/container to ...

### 3. Composition/Information on Ingredients

<u>Chemical Name</u>	<u>CAS-No.</u>	<u>Wt. %</u>	<u>GHS Symbols</u>	<u>GHS Statements</u>
BENZALDEHYDE	100-52-7	2.5-10	GHS07-GHS08	H302-312-315-317-334
CITRUS AURANTIFOLIA (CHRISTMAN) SWINGLE	8008-26-2	2.5-10	GHS07-GHS08	H304-315-317-319
2,6-OCTADIENAL, 3,7-DIMETHYL	5392-40-5	1.0-2.5	GHS07	H312-315-317-319
ETHYL ACETATE	141-78-6	1.0-2.5	No Information	No Information

Exact percentages have been withheld as trade secrets as defined by 29 CFR 1910.1200

### 4. First-aid Measures



**FIRST AID - INHALATION:** If inhaled, remove to fresh air. Administer oxygen if necessary. Consult a physician if symptoms persist or exposure was severe.

**FIRST AID - SKIN CONTACT:** Remove contaminated clothing. Wash with soap and water. Obtain medical attention if irritation persists.

**FIRST AID - EYE CONTACT:** Rinse thoroughly with plenty of water for at least 15 minutes and consult a physician.

**FIRST AID - INGESTION:** DO NOT induce vomiting unless directed to do so by a physician or poison control center.

### 5. Fire-fighting Measures

**UNUSUAL FIRE AND EXPLOSION HAZARDS:** No Information

**SPECIAL FIREFIGHTING PROCEDURES:** Standard procedure for chemical fires. WaterFoam

**EXTINGUISHING MEDIA:** Alcohol Foam, Carbon Dioxide, Dry Chemical, Foam, Water Fog

### 6. Accidental Release Measures

**ENVIRONMENTAL PRECAUTIONS:** No Information

**STEPS TO BE TAKEN IN CASE MATERIAL IS RELEASED OR SPILLED:** Stop leaks. Clean up large spills with vacuum truck. Soak up small spills with absorbent material and place in labeled waste container. Observe all Federal, State, and Local waste disposal regulations and report any release to the environment. Wear adequate personal protective clothing and equipment when handling this material.

### 7. Handling and Storage



**HANDLING:** Avoid contact with skin or eyes. Avoid breathing vapors. Handle in well ventilated area. Empty containers may contain explosive vapors. Smoking in area prohibited. Remove all ignition sources while handling.

**STORAGE:** No Information

### 8. Exposure Controls/Personal Protection

#### Ingredients with Occupational Exposure Limits

<u>Chemical Name</u>	<u>ACGIH TLV-TWA</u>	<u>ACGIH-TLV STEL</u>	<u>OSHA PEL-TWA</u>	<u>OSHA PEL-CEILING</u>
Benzaldehyde	N.E.	N.E.	N.E.	N.E.
Citrus aurantifolia (Christman) Swingle	N.E.	N.E.	N.E.	N.E.
2,6-Octadienal, 3,7-dimethyl	5 ppm	N.E.	N.E.	N.E.
Ethyl Acetate	N.E.	N.E.	N.E.	N.E.

Further Advice: MEL = Maximum Exposure Limit OES = Occupational Exposure Standard SUP = Supplier's Recommendation Sk = Skin Sensitizer N.E. = Not Established

### Personal Protection



**RESPIRATORY PROTECTION:** No Information



**SKIN PROTECTION:** Impervious gloves. Lab coat



**EYE PROTECTION:** Safety glasses with side-shields



**OTHER PROTECTIVE EQUIPMENT:** Eye wash and safety shower.



**HYGIENIC PRACTICES:** Handle in accordance with good industrial hygiene and safety practice.

## 9. Physical and Chemical Properties

<b>Appearance:</b>	No Information	<b>Physical State:</b>	No Information
<b>Odor:</b>	Characteristic of Cherry	<b>Odor Threshold:</b>	No Information
<b>Density, g/cm<sup>3</sup>:</b>	0.000	<b>pH:</b>	No Information
<b>Freeze Point, °C:</b>	No Information	<b>Viscosity:</b>	No Information
<b>Solubility in Water:</b>	No Information	<b>Partition Coefficient, n-octanol/water:</b>	No Information
<b>Decomposition temperature, °C</b>	No Information		
<b>Boiling Range, °C:</b>	192 - 0	<b>Explosive Limits, %:</b>	N.I. - N.I.
<b>Combustibility:</b>	Does not Support Combustion	<b>Flash Point, °C:</b>	-3.0
<b>Evaporation Rate:</b>	No Information	<b>Auto-Ignition Temperature, °C</b>	No Information
<b>Vapor Density:</b>	No Information	<b>Vapor Pressure, mmHg:</b>	No Information

(See "Other information" Section for abbreviation legend)

## 10. Stability and Reactivity

**STABILITY:** Stable under recommended storage conditions.

**CONDITIONS TO AVOID:** No Information

**INCOMPATIBILITY:** None known

**HAZARDOUS DECOMPOSITION PRODUCTS:** No Information

## 11. Toxicological Information

This product is a mixture for which no health hazard data exists. The hazard communication standard requires that mixtures be assumed to present the same health hazards as do the components that constitute at least 1% of the mixture (0.1% for carcinogens). OSHA has noted, however, that the hazards of individual components may be altered by including them in a mixture.

This preparation has not been evaluated.

**EFFECT OF OVEREXPOSURE - INHALATION:** No Information

**EFFECT OF OVEREXPOSURE - SKIN CONTACT:** No known effects.

**EFFECT OF OVEREXPOSURE - EYE CONTACT:** May cause irritation.

**EFFECT OF OVEREXPOSURE - INGESTION:** May be harmful if swallowed.

**CARCINOGENICITY:** No Information

**PRIMARY ROUTE(S) OF ENTRY:** Eye Contact, Ingestion, Inhalation, Skin Contact

#### Acute Toxicity Values

The acute effects of this product have not been tested. Data on individual components are tabulated below

CAS-No.	Chemical Name	Oral LD50	Dermal LD50	Vapor LC50
100-52-7	Benzaldehyde	1300	N.I.	N.I.
8008-26-2	Citrus aurantifolia (Christman) Swingle	4095	2500	N.I.
5392-40-5	2,6-Octadienal, 3,7-dimethyl	4950	2000	N.I.

N.I. = No Information

## 12. Ecological Information

**ECOLOGICAL INFORMATION:** May cause long-term adverse effects in the aquatic environment.

## 13. Disposal Information



### Product

**DISPOSAL METHOD:** Can be incinerated, when in compliance with local regulations. Must be disposed of in accordance with all applicable Federal, State, and Local regulations.

**STEPS TO BE TAKEN IN CASE MATERIAL IS RELEASED OR SPILLED:** Stop leaks. Clean up large spills with vacuum truck. Soak up small spills with absorbent material and place in labeled waste container. Observe all Federal, State, and Local waste disposal regulations and report any release to the environment. Wear adequate personal protective clothing and equipment when handling this material.

## 14. Transport Information

**SPECIAL TRANSPORT PRECAUTIONS:** No Information

**DOT Proper Shipping Name:** No Information  
**DOT Technical Name:** No Information  
**DOT Hazard Class:** No Information  
**DOT UN/NA Number:** No Information

**Packing Group:** II  
**Hazard SubClass:** No Information  
**Resp. Guide Page:** No Information

## 15. Regulatory Information

### U.S. Federal Regulations:

#### CERCLA - SARA Hazard Category

No Information

Skin Corrosion or Irritation, Respiratory or Skin Sensitization, Specific target organ toxicity (single or repeated exposure)

#### SARA SECTION 313:

Section 313 of title III of the Superfund Amendment and Reauthorization Act of 1986 (SARA). This product does not contain any reportable levels of a chemical or chemicals which are subject to the reporting requirements of the Act and Title 40 of the Code of Federal Regulations, Part 372

**TOXIC SUBSTANCES CONTROL ACT:**

## NEW JERSEY RIGHT-TO-KNOW:

## PENNSYLVANIA RIGHT-TO-KNOW

## CALIFORNIA PROPOSITION 65 CARCINOGENS



## Warning

## CALIFORNIA PROPOSITION 65 REPRODUCTIVE TOXINS



## Warning

## CANADIAN WHMIS:

<b>WHMIS Class</b>	No Information
--------------------	----------------

## 16. Other Information

<b>Revision Date:</b>	9/23/2024	<b>Supersedes Date:</b>	New MSDS
<b>Reason for revision:</b>	No Information		
<b>Datasheet produced by:</b>	Regulatory Department		

**HMIS Ratings:**

<b>Health:</b>	N.I.	<b>Flammability:</b>	N.I.	<b>Reactivity:</b>	N.I.	<b>Personal Protection:</b>	N.I.
----------------	------	----------------------	------	--------------------	------	-----------------------------	------

**Volatile Organic Compounds, gr/ltr:** 0

**Text for GHS Hazard Statements shown in Section 3 describing each ingredient:**

Harmful if swallowed.  
May be fatal if swallowed and enters airways.  
Harmful in contact with skin.  
Causes skin irritation.  
May cause an allergic skin reaction.  
Causes serious eye irritation.

May cause allergy or asthma symptoms or breathing difficulties if inhaled.

**Icons for GHS Pictograms shown in Section 3 describing each ingredient:**



Legend: N.A. - Not Applicable, N.E. - Not Established, N.D. - Not Determined

The information on this sheet corresponds to our present knowledge. It is not a specification and it does not guarantee specific properties. The information is intended to provide general guidance as to health and safety based upon our knowledge of the handling, storage, and use of the product. It is not applicable to unusual or non-standard uses of the product where instructions and recommendations are not followed.