

Skin Attachment Adhesives



Skin is complicated. It varies greatly from person to person, and can be fragile, wet, elastic, oily, dry or any number of combinations. Choosing the right skin attachment adhesive is both fundamental and critical when designing a medical device to ensure successful attachment to patient skin.

Our team of application and technology experts are dedicated to helping make the right skin adhesive selections for your specific skin attachment application needs. Our skin attachment adhesives have been thoroughly tested. We have Technical Data sheets, Safety Data Sheets, and ISO 10993 Biocompatibility testing support documentation which can be furnished upon request. You can talk to an expert today to find out more about the available documentation for our skin attachment adhesive solutions

Our pressure sensitive adhesive (PSA) solutions are used for a variety of applications.

MEDICAL TAPES AND BANDAGES

Our adhesives meet a broad range of applications for tapes and bandages, and they offer a variety of performance, balancing adhesion and ease of removal.



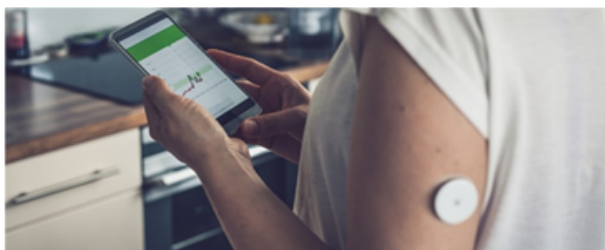
WOUND DRESSINGS

Wound dressing adhesives need to be skin friendly with long term wear. Our adhesives are suitable for all skin types and balance adhesion with performance.



SPECIALTY CUSTOM SOLUTIONS

From ostomy to electronics, our technical team partners with customers to deliver products that meet their needs and performance requirements.



WEARABLE DEVICES

The adhesive must accommodate the unique weight and geometry of the device, whether it's a patient monitoring device or thermometer patch.



DRAPES AND INCISION FILMS

Adhesives help surgical drapes stay in place during surgery, while incision films minimize surgical impact on the skin. They must bond quickly to sterilized skin.



ATHLETIC AND KINESIOLOGY TAPES

Kinesiology tapes maintain adhesion under stress and sweat and allow athletes to maintain high performance.



Pressure sensitive adhesive (PSA) peel adhesion tends to vary from patient to patient, depending on variations in the patients' skin oiliness and their overall activity. Other factors include device design and sterilization.

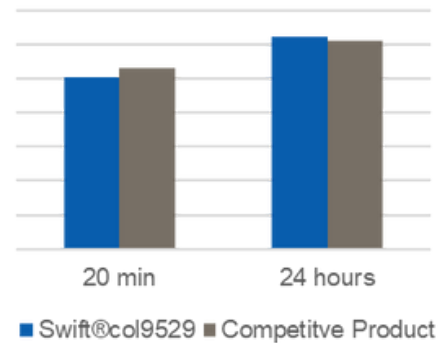
PRESSURE SENSITIVE TECHNOLOGIES

Our most popular adhesives are solvent-based acrylic technologies and hot melt PSA technology. Each of these technologies brings different benefits and are used for different applications. Here is a basic summary of the leading technologies in skin attachment adhesives:

Key Attributes	Rubber	Acrylic	Silicone
Peel adhesion	High	Low -high	Low -medium
Sterilization compatibility	ETO, Gamma, Steam	ETO, Gamma, Steam	ETO
Breathability	Medium	Low	Need perforation
Initial tack	Medium - high	Low - high	Low

COMPETITIVE COMPARISON

At equivalent coat weights, Swift®col 9529 performs equivalent to market leading solvent based acrylic competitive product on 180° Peel tests on Steel.



SELECTING THE RIGHT PRODUCT

Choosing the right adhesive is critical when you are designing a medical device that attaches to a patient's skin. Our team of application and technology experts can help guide you to the right adhesives for your needs.

Product	Technology	Solid Content %	Viscosity (cp)	Tack	Adhesion	Cohesion	SAFT	Applications
Sintecol 1050/M	Acrylic	49	3,000 @ 25°C	☐	☐	☐	☐	Tapes
Swift®col 9529	Acrylic	55	2,500 @ 25°C	●	☐	☐	☐	Bandages, wound dressing
20248	Acrylic	50	3,000 @ 25°C	●	☐	☐	☐	Patches, kinesiology, drapes
MH205	Rubber Hot Melt	100	6,000 @ 175°C	☐	☐	☐	☐	Bandages,
HM2816	Rubber Hot Melt	100	1,500 @ 175°C	●	☐	☐	☐	Wearables
Swift®col 9063	Natural Rubber	61	170,000 @ 25°C	☐	●	☐	☐	Athletics tapes
PD2056F	Water-based	60	1,000 @ 25°C	☐	☐	☐	☐	Specialty, wound Dressing
Lunamelt™ PS 4015	Rubber Hot Melt	100	4600 @ 175°C	●	●	☐	☐	Plaster, adhesive bandages